



Description:

The **KTT1KP Series** Temperature transmitters are precision platinum RTD sensors which can be interfaced with a computerized monitoring or control system. The transmitter is standard with a 1000 ohm RTD and provides a 4-20 mA over a specified range.

The sensors are available in different housings, with various configurations and options for duct, immersion, duct averaging, remote strap-on and outside air applications. The single point sensors are encapsulated in a 6.35mm (0.25") OD 304 stainless steel probe. All probes are constructed to provide good heat transfer and fast response. The averaging sensors are plenum rated.

Specifications:

Sensor Input:	1000 ohm platinum TCR 0.00375 ohm / ohm / °C
Configuration:	2-wire, loop-powered
Rangeability Limits:	KTT1KP -30° to 250°F (-34° to 121°C) Min span of 40°F (22°C)
Output:	4-20 mA
Output Limit:	28 mA (sensor leads open)
Loop Calibration Output:	20 mA ±0.2%
Supply Voltage:	11-35 VDC (one power supply may power multiple units)
Max Impedance:	680Ω @ 24 VDC
Environment:	Ambient Operating Temperature: 0° to 140° F (-18° to 60° C) Humidity: 0% to 95% non-condensing
Accuracy:	0.1°F or 0.2% of span
Physical:	Dimensions: 1.5" W x 3" L x 1" H (3.8 x 7.6 x 2.5 cm)

Features:

- Low cost
- Platinum RTD
- High accuracy temperature transmitters

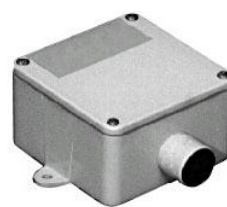
Product Ordering Information:



KTT1KP-D Duct Sensor – For single point monitoring. Standard 8" probe length and enclosures to fit any application.*



KTT1KP-RS Strap-on Sensor – Is a stainless steel probe and is used in remote applications where an immersion sensor cannot be installed.



KTT1KP-O OSA Sensor – Comes in a PVC enclosure with 1/2" NPT fitting for connection to conduit. It incorporates a sun / wind shield to protect the sensor.



KTT1KP-FD Flex-Duct Sensor – Is made of 20' flexible plenum rated cable which incorporates numerous sensors along the assembly. It acts as a single sensor averaging any temperature change across the sensors.*



KTT1KP-W Immersion Sensor – Comes with probe and has a 1/2" NPT fitting to be mounted into a brass thermowell (included). Standard 4" length.*



KTT1KP-ES Executive Space Sensor – Features universal back plate to mount to any wall box or may be flush mounted.



KTT1KP-PS Standard Plastic Space Sensor – Two piece enclosure for direct wall mounting. Tan cover with brushed face plate.



KTT1KP-SS Stainless Space Sensor – Mounted to wall box where protection is required.

*Special lengths available upon request

Dimensions & Wiring Connections

